

# PRECONTRAIN

502



  
**Serge Ferrari**



## MAIN FEATURES

- Flexibility and strength
- Heat and weather protection
- High UV resistance
- Permanent translucence
- Wide range of colours

## APPLICATIONS

- Facade blinds, awnings
- Canopies
- Shade sails
- Light structures



Colours range meets current architectural trends

## Colour for creativity

- A palette of 40 colours including metallic finishes and interferential colours.
- Several colour collections to give personality to the most varied designs.
- A unique range coordinated with other Serge Ferrari products to harmonise blinds, facades and other textile coverings.



Protects from external attack, maintains natural light supply

## High-performance thermal protection

The wide range of colours enables selection to each specific location and:

- contributes to optimized user comfort,
- enhances the aesthetic aspirations of each project.



Durability and reliability guaranteed by Précontraint Serge Ferrari® technology

## Proven robustness

- Flexibility and strength providing total freedom of shape and size.
- High UV resistance due to rigorous pigment selection.
- Easy upkeep ensured by a very smooth finish and an innovative surface treatment.

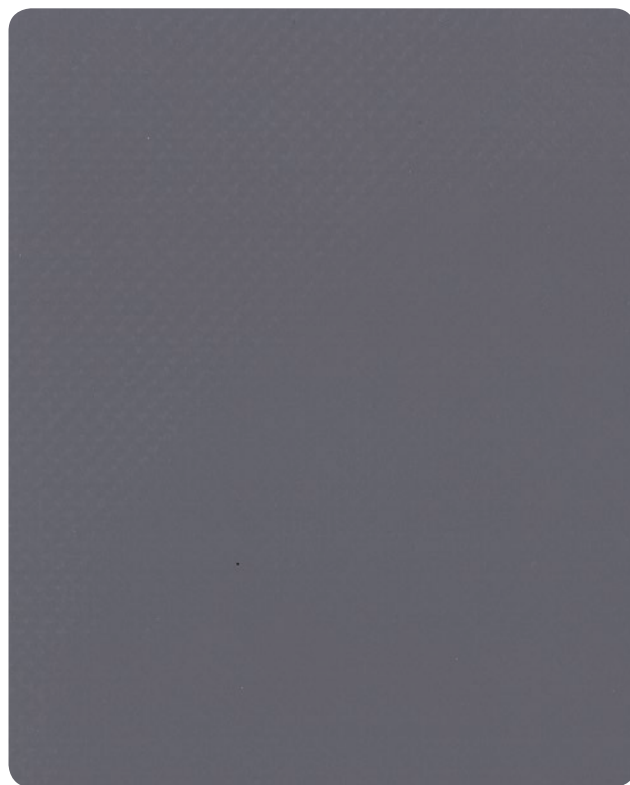
# PRECONSTRAINT

502



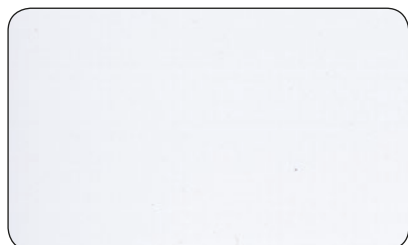
**Shifting grey**

502-1499



**Concrete**

502-2167



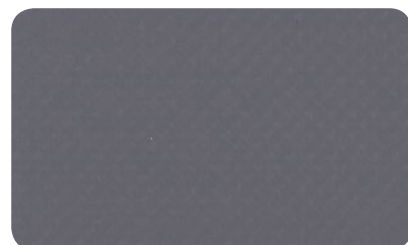
**White**

502-8102



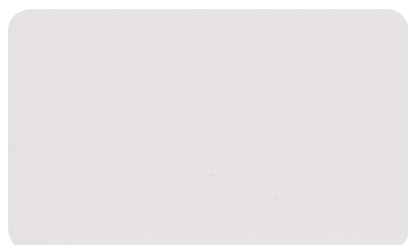
**Boulder**

502-2171



**Concrete**

502-2167



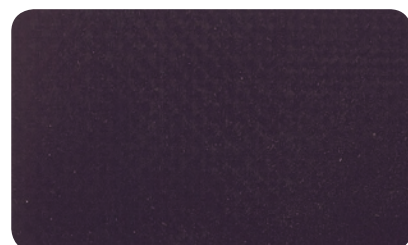
**Mastic**

502-2144



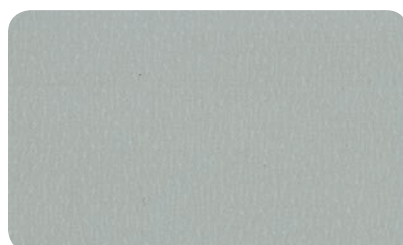
**Shifting grey**

502-1499



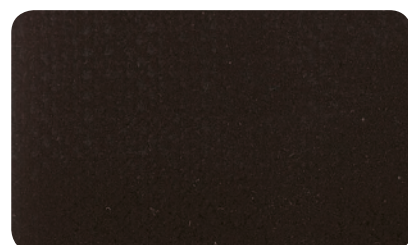
**Slate**

502-2162



**Aluminium**

502-2168



**Black**

502-8450



**Champagne**

502-8341



**Vanilla**

502-8861



**Camel**

502-2141



**Sandy beige**

502-2135



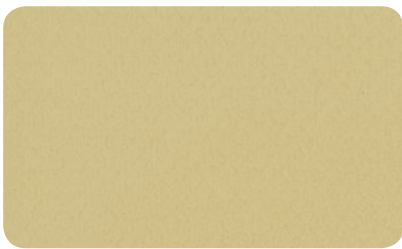
**Pepper**

502-2012



**Dead leaf**

502-2138



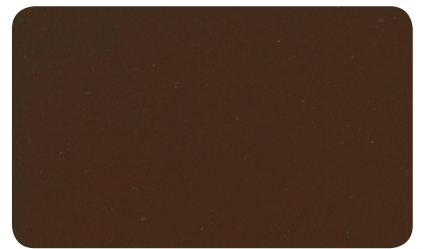
**Gold**

502-2145



**Cocoa**

502-2148



**Walnut stain**

502-2137



**Beetle**

502-2149



**Onyx**

502-2136



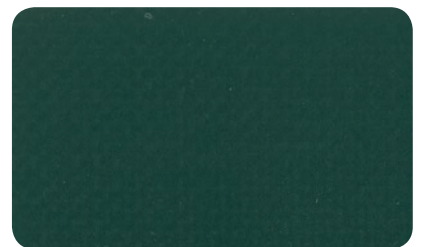
**Moss green**

502-2158



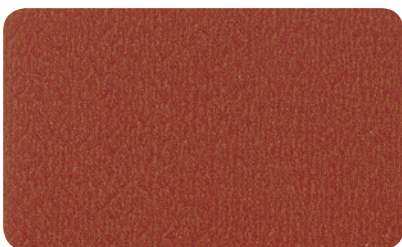
**Tennis**

502-8056



**Spruce**

502-2156



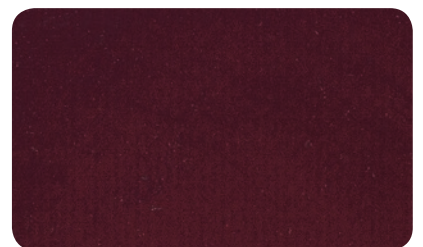
**Velvet red**

502-2152



**Poppy**

502-8255



**Burgundy**

502-8284





**Mandarin**

502-8204



**Carrot**

502-2172



**Tuscan**

502-2173



**Chick**

502-1013



**Buttercup**

502-2166



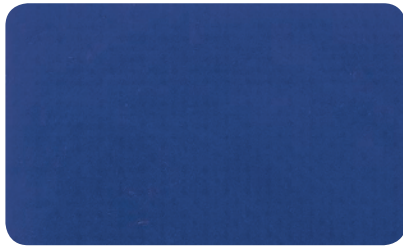
**Aniseed**

502-2157



**Lagoon**

502-2160



**Midnight blue**

502-2161



**Navy**

502-1125



**Turtledove**

502-2163



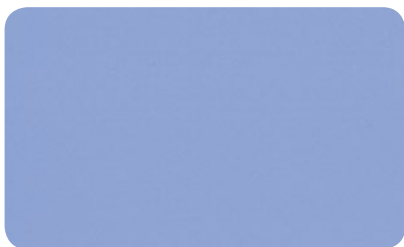
**Pale pink**

502-2151



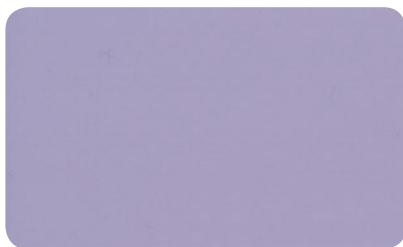
**Raspberry**

502-2150



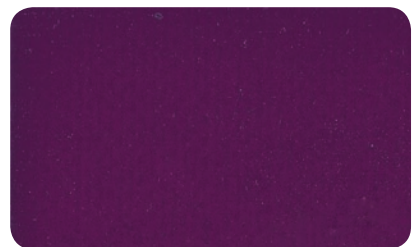
**Cornflower**

502-2159



**Violet parma**

502-2164



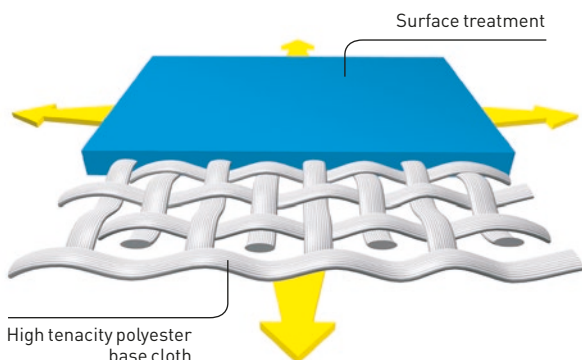
**Blackcurrant**

502-2165

# Exclusive Précontraint Serge Ferrari® technology



Patented worldwide, Précontraint Serge Ferrari® technology involves keeping the composite under tension throughout the manufacturing cycle.



## Strength characteristics

- Exceptional dimensional stability
- Long-term strength
- Greater coating thickness at the top of the yarns
- Exceptional flatness

## Benefits\*

- **No deformation; won't sag**
- **Tear resistant**
- **Long-term aesthetics and strength**
- **Smooth finish, easy maintenance**

\* Benefits observed for normal product usage

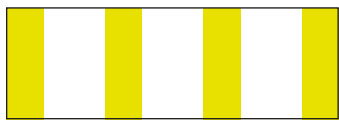
## Solar and light properties (EN 14501)

|  | Reference | TS | RS | AS |  | Reference | TS | RS | AS |
|--|-----------|----|----|----|--|-----------|----|----|----|
|  | 502-1013  | 10 | 61 | 29 |  | 502-2160  | 5  | 35 | 60 |
|  | 502-1125  | 4  | 21 | 75 |  | 502-2161  | 6  | 28 | 66 |
|  | 502-1499  | 4  | 48 | 48 |  | 502-2162  | 6  | 25 | 69 |
|  | 502-2012  | 4  | 44 | 52 |  | 502-2163  | 5  | 48 | 47 |
|  | 502-2135  | 7  | 58 | 35 |  | 502-2164  | 7  | 50 | 43 |
|  | 502-2136  | 2  | 15 | 83 |  | 502-2165  | 15 | 29 | 56 |
|  | 502-2137  | 6  | 22 | 72 |  | 502-2166  | 12 | 56 | 32 |
|  | 502-2138  | 4  | 36 | 60 |  | 502-2167  | 2  | 29 | 69 |
|  | 502-2141  | 8  | 52 | 40 |  | 502-2168  | 1  | 43 | 56 |
|  | 502-2144  | 7  | 66 | 27 |  | 502-2171  | 4  | 48 | 48 |
|  | 502-2145  | 7  | 57 | 36 |  | 502-2172  | 12 | 47 | 41 |
|  | 502-2148  | 4  | 30 | 66 |  | 502-2173  | 12 | 42 | 46 |
|  | 502-2149  | 3  | 24 | 73 |  | 502-8056  | 3  | 20 | 77 |
|  | 502-2150  | 11 | 46 | 43 |  | 502-8102  | 10 | 76 | 14 |
|  | 502-2151  | 8  | 60 | 32 |  | 502-8204  | 16 | 41 | 43 |
|  | 502-2152  | 9  | 37 | 54 |  | 502-8255  | 20 | 37 | 43 |
|  | 502-2156  | 4  | 15 | 81 |  | 502-8284  | 6  | 24 | 70 |
|  | 502-2157  | 8  | 47 | 45 |  | 502-8341  | 10 | 68 | 22 |
|  | 502-2158  | 4  | 34 | 62 |  | 502-8450  | 2  | 19 | 79 |
|  | 502-2159  | 5  | 46 | 49 |  | 502-8861  | 7  | 61 | 32 |

TS : Solar Transmission [%]  
 RS : Solar Reflection [%]  
 AS : Solar Absorption [%]  
 TS + RS + AS = 100% of incident energy

# Matching colours with **PRECONSTRAINT**

## 502 STRIPES



572-50488



572-50496



572-50491



572-50490



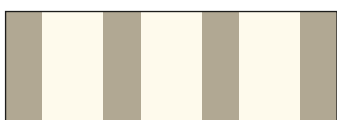
572-50489



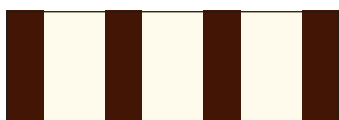
572-50504



572-50500



572-50499



572-50498



572-50501



582-50056



582-50054



582-50057



582-50055



582-50051



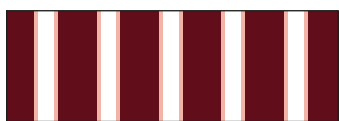
582-50053



582-50052



582-50050



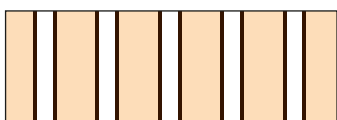
582-50048



582-50046



582-50049



582-50047

# PRECONTRAIT

## 502

| Technical properties                                   | Précontrait 502   | Standards     |
|--|---|---------------|
| Yarn   | 1100 dtex PES HT  |               |
| Weight   | 590 g/m <sup>2</sup>  | EN ISO 2286-2 |
| Width  | 180 cm  |               |
| Physical properties                                    |   |               |
| Tensile strength (warp/weft)                           | 250/250 daN/ 5 cm   | EN ISO 1421   |
| Tear strength (warp/weft)                              | 25/20 daN   | DIN 53.363    |
| Adhesion   | 9/9 daN/ 5 cm   | EN ISO 2411   |
| Surface treatment                                      |   |               |
| Finish   | Varnish both sides  |               |
| Flame retardancy                                       |   |               |
| Rating   | <b>M2/NFP 92-507 • B1/DIN 4102-1 • BS 7837 • 1530.3/AS/NZS • M2/UNE 23.727-90 • VKF 5.3/SN 198898 • Schwerbrennbar Q1-Tr1/ONORM A3800</b><br><b>CLASS 1/UNI 9177-87 • METHOD 1/NFPA 701 • CSFM T19 • CLASS A/ASTM E84 G1/</b><br><b>GOST 30244-94 • CAN ULCS109</b> |               |
| Euroclass  | <b>B-s2,d0/ EN 13501-1</b>  |               |
| Management system                                      |   |               |
| for Quality  |   | ISO 9001      |
| Certifications, labels, guarantees, recycling capacity |   |               |



The above technical data represent average values subject to a +/-5% tolerance.

The buyer of our products is fully responsible for their application and their transformation with regard to any possible third party. The buyer of our products is responsible for their implementation and installation according to the standards, workmanship and safety regulations in force in destination countries. For information on our contractual warranty, please refer to the relevant terms and conditions.

The values quoted above represent results of tests performed in compliance with common design practices and are provided for information only to enable customers to make the best use of our products. Our products are subject to changes based on technical advances and we reserve the right to modify their characteristics at any time. The buyer of our products is responsible for checking the validity of the above data.

### TOOLS AND SERVICES

- Maintenance manual and Life Cycle Assessment (LCA) available on request

#### → Contact

- Headquarters:  
+ 33 (0)4 74 97 41 33
- Your local representative:  
[www.sergeferrari.com](http://www.sergeferrari.com)

#### → TEXYLOOP®

- The Serge Ferrari operational recycling chain
- Secondary raw materials of high intrinsic value compatible with multiple processes
- A quantified response to combat depletion of natural resources

[www.texyloop.com](http://www.texyloop.com)

[www.sergeferrari.com](http://www.sergeferrari.com)

**Serge Ferrari**